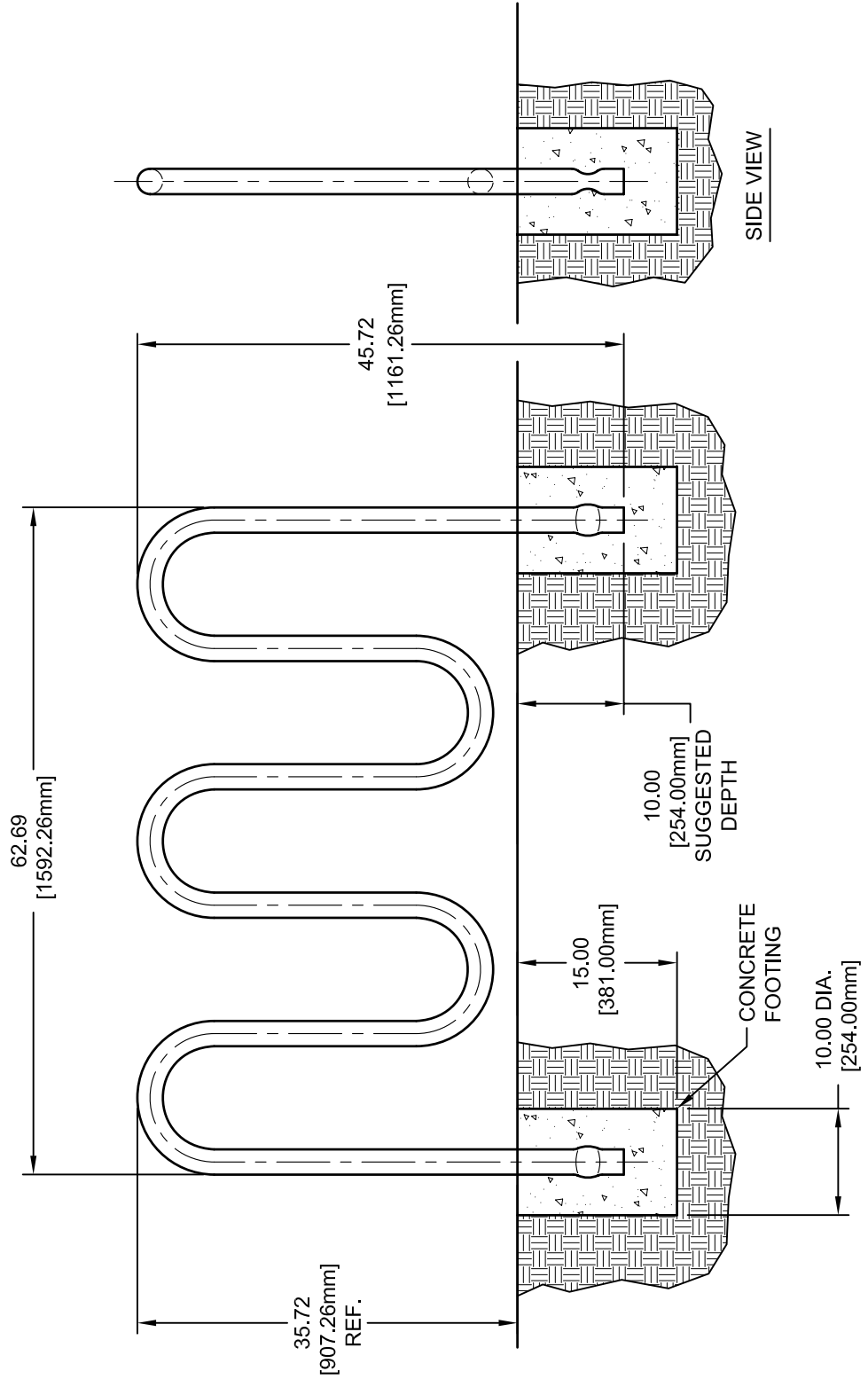


**NOTES:**

1. MATERIAL: 2-3/8" DIA. HEAVY GAUGE GALVANIZED STEEL PIPE.
2. FINISH: DURABLE OUTDOOR ALUMINUM ENAMEL OR POWDER COATED IN BLACK, BRONZE, BLUE, RED, OR GREEN. ADD "PC" TO PART NUMBER WHEN ORDERING.
3. PERMANENT INSTALLATION (AS SHOWN) IS STANDARD. FOR OPTIONAL SURFACE MOUNT INSTALLATION, ADD "SM" TO PART NUMBER WHEN ORDERING.
4. BRL3 ACCOMMODATES UP TO (7) BIKES.



REVISION		
REV.	DATE	BY
-	-	-




**Gared Holdings, LLC**  
9200 E. 146th St. Noblesville, IN 46060

THIS DOCUMENT CONTAINS TRADE SECRET AND OTHER MATERIALS WHICH ARE PROTECTED BY CONFIDENTIALITY NOTICE AND AGREEMENT AND BY COPYRIGHT. ANY USE OR COPYING OF THIS DOCUMENT EXCEPT AS AUTHORIZED BY GARED HOLDINGS, LLC IS STRICTLY PROHIBITED.

**LOOP STYLE BIKE RACK**

DRAWN	RWP	DATE	06/20/08	MATERIAL	N/A
APPROVED	CONNERLEY	DATE	06/20/08	FINISH	N/A
FILE LOC. Q:\Final Release\Specifications				DWG. NO.	BRL3
SIZE	SCALE	SHT. NO.	PART NO.	REV	
A	NOTED	1 OF 1	BRL3	-	



### MODEL BRL3

#### **LOOP STYLE RACK – 7 BIKE CAPACITY**

Bike rack shall be constructed of 2 3/8" [60.3 mm] O.D. x 0.156" [4.0 mm] wall galvanized steel tubing. Tubing shall be formed from one continuous length. Ends of bike rack shall extend 10" [254 mm] into concrete footings that are 10" [254 mm] minimum diameter x 15" [381 mm] minimum deep for permanent mounting.

Standard finish is galvanized. Optional powder coat finishes available in black, bronze, blue, red, or green. Powder coat finishes applied over galvanized base tube for durable outdoor resistance to the elements.

Capacity of the rack shall be 7 bicycles.

**Concrete for installation not included.**

Subject to design change and current manufacturing practices.  
Revised April 4, 2008 ©2008 Gared Holdings, LLC