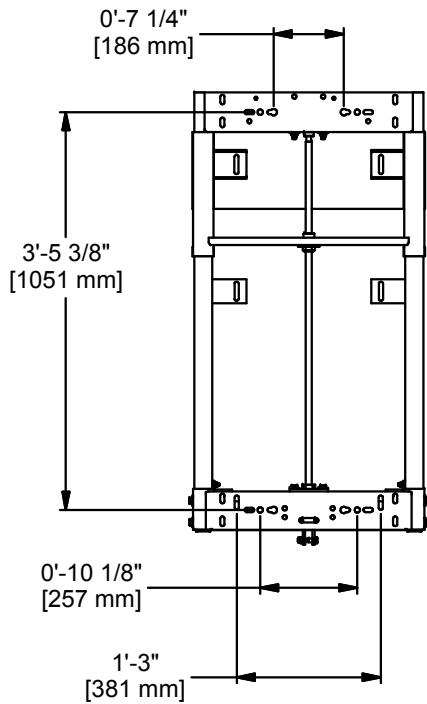
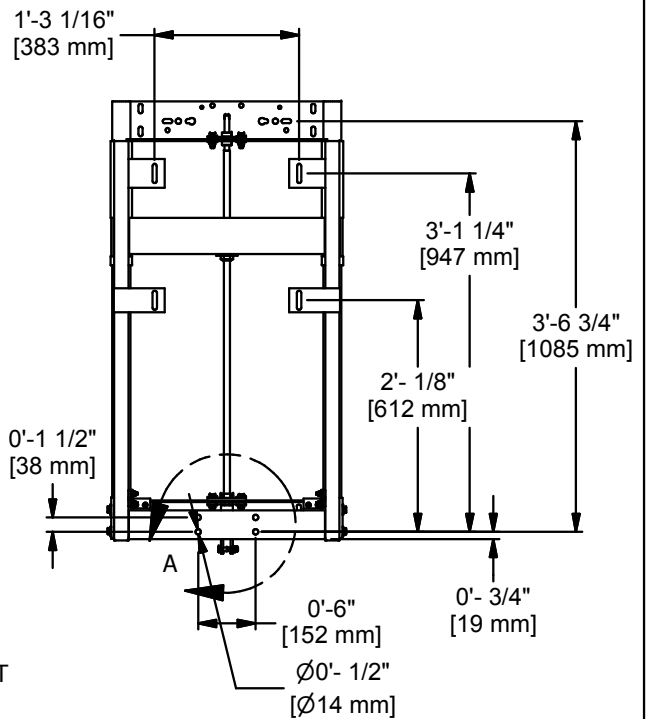
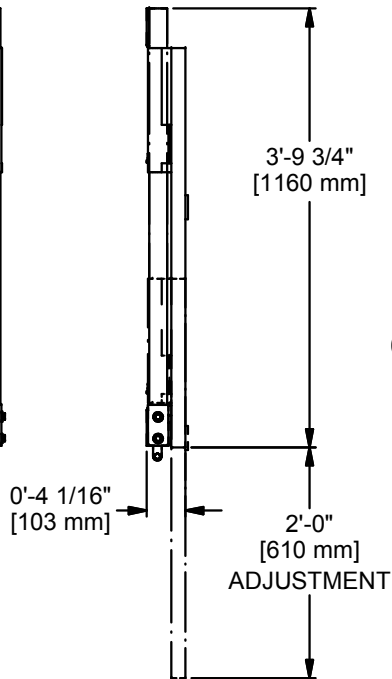


DETAIL A



STATIONARY MOUNTING SIDE



BOARD MOUNTING SIDE

REV	BY	DATE



Gared Holdings, LLC
9200 E. 146th St. Noblesville, IN 46060

THIS DOCUMENT CONTAINS TRADE SECRET AND OTHER MATERIALS WHICH ARE PROTECTED BY CONFIDENTIALITY NOTICE AND AGREEMENT AND BY COPYRIGHT. ANY USE OR COPYING OF THIS DOCUMENT EXCEPT AS AUTHORIZED BY GARED HOLDINGS, LLC IS STRICTLY PROHIBITED.

MANUAL ADJUST-A-GOAL

DRAWN CONNERLEY	DATE 11/3/2017	DATE ISSUED
APPROVED	DATE	
FILE LOC. Q:\Inventor Files\Specification Files\09_Accessories		
SIZE A	SCALE	SHT. NO. 1 OF 2
PART NO. 1131		REV



MODEL 1131

MANUAL HEIGHT ADJUSTER ADJUST-A-GOAL SERIES

APPLICATION

This unit is designed to adjust goal height from 8' to 10' and operate from floor level using a removable hand crank. This unit may be installed on any PSS and/or Gared basketball units as well as many by other manufacturers.

SPECIFICATION

Vertical tubing shall allow the slide tubing to move freely without binding. Horizontal structure are two 2" x 4" x 3/16" thick steel L braces, one at each end. A 1 1/2" x 3" x 3/16" thick steel tube is used as a direct goal attachment to transfer loads from backboard to the surrounding framework. All components are welded to insure stability during normal play. Screw rod shall be hardened 5/8" diameter stub acme thread design. Height is adjusted with hand held removable crank. Height adjustment label located outside the slide channel and viewable from the side of the unit shall be used to visually determine height settings from 8' to 10' in 3" increments.

Unit shall include a spring loaded lock located on the rod on the lower brace. This locks the rod in place when the unit is not being controlled by the crank handle. Units without a manual locking mechanism shall not be considered as equal.

Unit shall be furnished with standard flat black finish and should not be painted after shipment. Unit must be periodically lubricated to insure proper function and ease of height adjustment.

Subject to design change and current manufacturing practices.