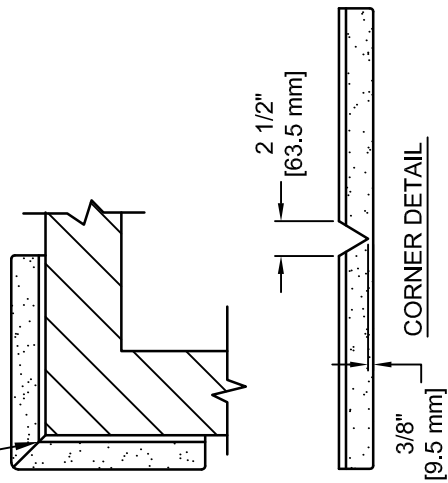
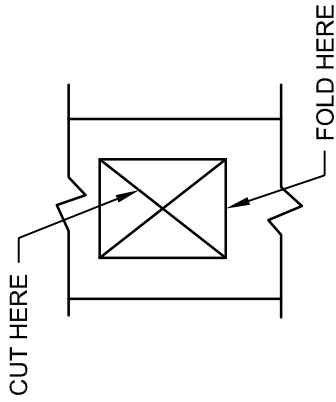
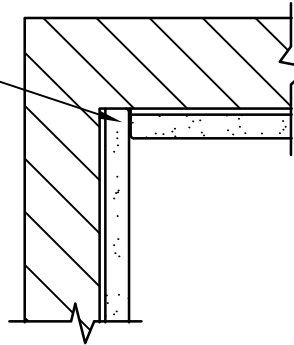


OUTSIDE CORNER - REMOVE 2 1/2" [63.5 mm] SECTION OF OSB AND FORM.



INSIDE CORNER LAP DETAILS



TYP. CUT-OUT

NOTE: GLUE IN CORNER INSERTS AND STAPLE FLATS UNDER PANEL, COVER INSIDE EDGES WITH ADDITIONAL VINYL AS REQUIRED.

NOTE:

ALL CUSTOM CUTTING AND FITTING OF PANELS IS TO BE DONE IN THE FIELD TO INSURE A PRECISE FIT.

FURRING STRIPS OPTIONAL

7/16" [11.11 mm] OSB BACKING BOARD

2" BONDED POLYURETHANE FOAM

14 OZ. MIN. POLYESTER LAMINATED VINYL ATTACHED TO BACKING WITH STAPLES EVERY 2.00"

1" [25.4] NAILING LIP

1" [25.4] NAILING LIP

2'-0" [0.61 m]

2'-0" [0.61 m]

5'-10" [1.78 m] FOAM PAD

4.00" [101.6 mm] TO OSB

FINISHED FLOOR

MEETS ALL REQUIREMENTS OF ASTM F2440-11

REVISION		
REV.	DATE	BY
-	-	-



Gared Holdings, LLC
9200 E. 146th St. Noblesville, IN 46060

THIS DOCUMENT CONTAINS TRADE SECRET AND OTHER MATERIALS WHICH ARE PROTECTED BY CONFIDENTIALITY NOTICE AND AGREEMENT AND BY COPYRIGHT. ANY USE OR COPYING OF THIS DOCUMENT EXCEPT AS AUTHORIZED BY GARED HOLDINGS, LLC IS STRICTLY PROHIBITED.

IMPACT2440BND WALL PADDING

DRAWN	CONNERLEY	DATE	04/17/13	MATERIAL	AS NOTED
APPROVED	CONNERLEY	DATE	04/17/13	FINISH	AS NOTED
FILE LOC. Q:\Final Release\Specifications				DWG. NO.	4120
SIZE	SCALE	SHT. NO.	PART NO.	REV	
A	NOTED	1 OF 1	4120	-	



MODEL 4120

IMPACT2440BND WALL PADDING

Wall padding standard size shall be 6' [1.82 m] x 2' [0.9 m] with 1" [25.4 mm] nailing margin on top and bottom of each panel. Nailing margin reduces foam height from 6' [1.8 m] to 5'-10" [1.77 m]. Pads shall be constructed using 2" [50.8 mm] thick 6 lbs. density bonded polyurethane foam cemented to 7/16" [11.11 mm] oriented strand board.

Cover material shall be 14-ounce polyester laminated vinyl stapled to backing every two inches. Vinyl to be flame retardant material, which meets NFPA 701, ASTM E84, and CSFM (California State Fire Marshall). Vinyl shall be available in white, yellow, orange, red, kelly green, forest green, royal blue, marine blue, navy blue, gray, black, maroon, beige, teal and purple.

Custom cutting and fitting of padding may be done in field to insure proper fit. Furring strips by others.

Product tested per ASTM F1292-09 and meets all requirements of ASTM F2440-11.

ACCESSORIES

WALL ATTACHMENT TRIMS AND HARDWARE

Most wall padding may be attached with special attachment trims and hardware. See the wall padding section in the specification manual.